

Table S1: Prevalence of low back pain for adults 70 years and older in 1990 and 2019 for both sexes and percentage change in rates per 100,000 in Iran
(Generated from data available from <http://ghdx.healthdata.org/gbd-results-tool>)

	1990		2019		Percentage change in rate per 100,000
	No (95% UI)	Rate per 100,000 (95% UI)	No (95% UI)	Rate per 100,000 (95% UI)	
Iran	219455 (175376 , 272955)	22841.1 (18253.4 , 28409.5)	753922 (613525 , 924587)	21714.8 (17671 , 26630.4)	-4.9 (-11.7 , 3.7)
Alborz	4313 (3439 , 5379)	21993.4 (17536.4 , 27431.9)	22299 (17763 , 27856)	20597.1 (16407.5 , 25730.7)	-6.3 (-14 , 2.1)
Ardebil	3580 (2847 , 4475)	22536.3 (17920.5 , 28168.5)	11939 (9687 , 14719)	21193.4 (17195.9 , 26127.5)	-6 (-14.8 , 4.3)
Bushehr	1932 (1525 , 2454)	21781.4 (17198.1 , 27665.7)	7580 (6047 , 9563)	20535.6 (16381 , 25905.4)	-5.7 (-14 , 3.3)
Chahar Mahaal and Bakhtiari	2452 (1958 , 3083)	22178.9 (17707.1 , 27888.2)	7849 (6399 , 9732)	20837.5 (16989.7 , 25836.9)	-6 (-15.4 , 5.9)
East Azarbayejan	10748 (8075 , 14073)	20049.3 (15063.6 , 26252)	33972 (25890 , 43522)	18376.5 (14004.6 , 23542)	-8.3 (-19.4 , 6.4)
Fars	12376 (9701 , 15730)	22080.8 (17308.9 , 28065)	41284 (33185 , 50902)	20669.1 (16614.4 , 25484.2)	-6.4 (-14.6 , 4.3)
Gilan	10013 (7795 , 12593)	22327 (17380.3 , 28079.5)	32631 (26037 , 40690)	20922.2 (16694.6 , 26089.8)	-6.3 (-15.5 , 5.6)
Golestan	4126 (3268 , 5181)	22457.9 (17788.4 , 28197.9)	12896 (10352 , 15989)	21001.9 (16858.2 , 26039.1)	-6.5 (-15 , 3.6)
Hamadan	7322 (5743 , 9258)	22335.7 (17516.4 , 28240.7)	19752 (16033 , 24695)	20914.3 (16977.2 , 26148.5)	-6.4 (-16.4 , 6.4)
Hormozgan	3523 (2799 , 4442)	22259.2 (17682.4 , 28064.8)	10394 (8349 , 12817)	20676.6 (16608 , 25495.3)	-7.1 (-15.8 , 2.4)
Ilam	1295 (1047 , 1611)	22286.8 (18021 , 27732.1)	3900 (3124 , 4810)	20902.2 (16745.1 , 25783.5)	-6.2 (-13.6 , 3.1)
Isfahan	16117 (12601 , 20382)	21871.6 (17100.5 , 27659.2)	51960 (41722 , 64361)	20585.4 (16529.2 , 25498.5)	-5.9 (-14.7 , 5)
Kerman	7112 (5626 , 8954)	22326.3 (17662.9 , 28110.4)	23266 (18740 , 28807)	21009.5 (16922.4 , 26012.8)	-5.9 (-16 , 7.5)

Kermanshah	5995 (4709 , 7535)	22299.6 (17516.7 , 28029.8)	17863 (14500 , 21994)	20800.3 (16884.4 , 25610.4)	-6.7 (-15.3 , 3)
Khorasan-e-Razavi	18164 (14221 , 23137)	22276.3 (17441.5 , 28376.1)	55051 (43970 , 68161)	20828.5 (16636 , 25788.9)	-6.5 (-16.5 , 5.2)
Khuzestan	12072 (9433 , 15368)	22175.8 (17327.1 , 28229.3)	33276 (26709 , 41744)	20667.6 (16588.8 , 25927.4)	-6.8 (-14.2 , 1.1)
Kohgiluyeh and Boyer-Ahmad	1040 (823 , 1318)	22215.1 (17565.1 , 28149)	4388 (3518 , 5408)	20613.7 (16527.2 , 25405.9)	-7.2 (-16.3 , 3.3)
Kurdistan	4615 (3688 , 5762)	22449.1 (17938.2 , 28027.9)	14197 (11513 , 17570)	20899 (16947.5 , 25863.6)	-6.9 (-14.7 , 1.5)
Lorestan	5103 (4073 , 6409)	22393.6 (17873.4 , 28122.2)	15302 (12387 , 19089)	20971.1 (16977.1 , 26161.2)	-6.4 (-16.2 , 3.9)
Markazi	5390 (4240 , 6818)	22121.4 (17402.3 , 27985.3)	17415 (14208 , 21486)	20774.7 (16949.1 , 25631.9)	-6.1 (-16 , 6.3)
Mazandaran	14684 (11924 , 17846)	32763.4 (26604.8 , 39816.2)	55225 (45957 , 65886)	31403.9 (26133.6 , 37466.3)	-4.1 (-12 , 5.3)
North Khorasan	1980 (1546 , 2523)	22485.7 (17561.5 , 28645.4)	7397 (5979 , 9165)	20945.7 (16930.1 , 25951)	-6.8 (-16.5 , 5.2)
Qazvin	3864 (3030 , 4854)	22284.7 (17471.2 , 27991.3)	11327 (9145 , 13999)	20836.1 (16821.7 , 25750.6)	-6.5 (-14.7 , 5.2)
Qom	2571 (2007 , 3249)	21614.1 (16871.1 , 27308.6)	9694 (7752 , 12028)	20310.2 (16241.1 , 25198.9)	-6 (-14.8 , 3.6)
Semnan	2560 (2012 , 3246)	22056.7 (17340.9 , 27970.2)	6996 (5655 , 8737)	20696.6 (16728.5 , 25845.4)	-6.2 (-14.9 , 5.7)
Sistan and Baluchistan	4211 (3304 , 5330)	22057.4 (17304.6 , 27918.1)	11694 (9490 , 14415)	20568.8 (16691.7 , 25355)	-6.7 (-16.1 , 3.5)
South Khorasan	3146 (2463 , 3953)	22363.5 (17505.1 , 28096.7)	8463 (6752 , 10416)	21074.7 (16813.3 , 25938.2)	-5.8 (-15.9 , 6.2)
Tehran	36026 (29257 , 44577)	23868.6 (19383.8 , 29533.9)	159950 (131198 , 194849)	23363.1 (19163.4 , 28460.6)	-2.1 (-11.1 , 8.1)
West Azarbayejan	6730 (5296 , 8446)	22461.2 (17673.6 , 28187.5)	25155 (20217 , 31194)	21153.4 (17001.2 , 26232.1)	-5.8 (-14.1 , 4.7)
Yazd	3183 (2506 , 3995)	22009.3 (17326.7 , 27619.9)	9709 (7796 , 11971)	20716.9 (16633.9 , 25541.8)	-5.9 (-15.4 , 5.6)
Zanjan	3210 (2521 , 4029)	22473.6 (17650.6 , 28209.5)	11096 (8926 , 13678)	21109.2 (16981.7 , 26021.8)	-6.1 (-15.5 , 5.5)

Table S2: Incidence of low back pain for adults 70 years and older in 1990 and 2019 for both sexes and percentage change in rates per 100,000 in Iran
(Generated from data available from <http://ghdx.healthdata.org/gbd-results-tool>)

	1990		2019		Percentage change in rate per 100,000
	No (95% UI)	Rate per 100,000 (95% UI)	No (95% UI)	Rate per 100,000 (95% UI)	
Iran	81154 (61675 , 103750)	8446.6 (6419.2 , 10798.4)	281145 (220402 , 351757)	8097.7 (6348.1 , 10131.5)	-4.1 (-11.2 , 5.6)
Alborz	1626 (1238 , 2074)	8290.4 (6315.9 , 10574.4)	8606 (6610 , 10869)	7949.7 (6105.6 , 10040)	-4.1 (-11.3 , 4.2)
Ardebil	1336 (1021 , 1692)	8411.6 (6427.2 , 10648)	4541 (3555 , 5663)	8061.5 (6310.2 , 10053.3)	-4.2 (-11.9 , 5)
Bushehr	734 (555 , 942)	8276.6 (6256.4 , 10625.9)	2934 (2263 , 3722)	7948.6 (6130.3 , 10083.8)	-4 (-11.9 , 4.7)
Chahar Mahaal and Bakhtiari	926 (701 , 1195)	8377.8 (6343.4 , 10809.5)	3001 (2321 , 3745)	7968 (6162.9 , 9943.8)	-4.9 (-14.1 , 7.1)
East Azarbayejan	4204 (3126 , 5473)	7841.9 (5831.6 , 10209.9)	13678 (10289 , 17501)	7398.8 (5565.3 , 9466.8)	-5.6 (-15.7 , 7.4)
Fars	4680 (3551 , 5991)	8350.5 (6335.2 , 10689.7)	15825 (12404 , 19704)	7922.7 (6210 , 9864.8)	-5.1 (-13.3 , 4.2)
Gilan	3782 (2841 , 4832)	8433.4 (6334 , 10775.4)	12475 (9783 , 15601)	7998.8 (6272.4 , 10003.1)	-5.2 (-14.6 , 7.4)
Golestan	1549 (1172 , 1972)	8429.3 (6376.5 , 10734.4)	4920 (3844 , 6170)	8012.6 (6259.6 , 10048.7)	-4.9 (-12.9 , 5.2)
Hamadan	2758 (2082 , 3585)	8413.8 (6351 , 10936.1)	7544 (5852 , 9404)	7987.7 (6196.8 , 9957.4)	-5.1 (-15.4 , 7.4)
Hormozgan	1327 (1019 , 1689)	8381 (6439.6 , 10667.5)	3979 (3117 , 4936)	7915.3 (6199.6 , 9818.6)	-5.6 (-14.2 , 3.8)
Ilam	485 (377 , 608)	8355 (6491.2 , 10463.4)	1493 (1162 , 1871)	8002.5 (6227 , 10029)	-4.2 (-11.6 , 4.3)
Isfahan	6128 (4638 , 7910)	8316.4 (6294.5 , 10734.6)	19970 (15469 , 24924)	7911.7 (6128.6 , 9874.5)	-4.9 (-14.6 , 5.5)
Kerman	2685 (2031 , 3463)	8430 (6376 , 10871.5)	8877 (6959 , 11180)	8015.6 (6283.8 , 10096)	-4.9 (-14.6 , 7.4)
Kermanshah	2257 (1727 , 2903)	8396.3 (6423.3 , 10800.3)	6797 (5302 , 8510)	7914.2 (6173.9 , 9909)	-5.7 (-14.2 , 4.6)
Khorasan-e-Razavi	6868 (5114 , 8957)	8423.1 (6272.4 , 10985.4)	21147 (16306 , 26474)	8000.9 (6169.2 , 10016.3)	-5 (-14.4 , 6.7)
Khuzestan	4555 (3454 , 5858)	8367.6 (6345.1 , 10759.8)	12783 (9968 , 15970)	7939.7 (6191.1 , 9919)	-5.1 (-12 , 3.4)

Kohgiluyeh and Boyer-Ahmad	391 (302 , 498)	8354.2 (6438.5 , 10629.5)	1672 (1311 , 2092)	7855.9 (6160.1 , 9827.7)	-6 (-14.3 , 4.8)
Kurdistan	1727 (1332 , 2196)	8398.7 (6476.9 , 10681.2)	5409 (4244 , 6701)	7962.1 (6247.6 , 9863.7)	-5.2 (-12.7 , 3.9)
Lorestan	1916 (1475 , 2434)	8405.7 (6472.5 , 10683)	5846 (4582 , 7311)	8011.8 (6279.3 , 10019.6)	-4.7 (-13.4 , 4.1)
Markazi	2033 (1554 , 2624)	8345.6 (6377.8 , 10770.7)	6640 (5229 , 8236)	7920.9 (6237.9 , 9824.9)	-5.1 (-15.9 , 7.9)
Mazandaran	4255 (3182 , 5535)	9493.3 (7100.5 , 12349.8)	15997 (12492 , 20169)	9096.5 (7103.4 , 11469.2)	-4.2 (-13.3 , 7.5)
North Khorasan	747 (568 , 970)	8488.2 (6446.1 , 11016.2)	2818 (2192 , 3522)	7980.1 (6206.2 , 9972.4)	-6 (-15.3 , 6.3)
Qazvin	1461 (1096 , 1904)	8422.8 (6321.8 , 10982.2)	4336 (3361 , 5428)	7975.5 (6182.8 , 9984.6)	-5.3 (-15.2 , 7.2)
Qom	977 (741 , 1256)	8215.4 (6228.7 , 10558.6)	3755 (2939 , 4701)	7866.7 (6157.5 , 9848.3)	-4.2 (-13.3 , 5.6)
Semnan	971 (727 , 1268)	8368 (6268.7 , 10929.3)	2698 (2109 , 3390)	7981.1 (6239.3 , 10027.4)	-4.6 (-13.9 , 6.5)
Sistan and Baluchistan	1598 (1219 , 2077)	8369.4 (6382.9 , 10881.1)	4482 (3532 , 5571)	7883.6 (6212.8 , 9798.1)	-5.8 (-15.4 , 6.4)
South Khorasan	1184 (893 , 1540)	8418.6 (6344.8 , 10944.9)	3220 (2518 , 4036)	8019.4 (6271 , 10049.4)	-4.7 (-14.3 , 7.3)
Tehran	13050 (10029 , 16590)	8646.3 (6644.2 , 10991.6)	58148 (45930 , 72786)	8493.4 (6708.7 , 10631.4)	-1.8 (-9.8 , 8.1)
West Azarbayejan	2529 (1913 , 3276)	8440.3 (6384.2 , 10934.7)	9604 (7434 , 12047)	8075.9 (6251.4 , 10130.9)	-4.3 (-13.2 , 6.4)
Yazd	1207 (902 , 1553)	8347.3 (6235.1 , 10738.7)	3722 (2944 , 4630)	7942.3 (6281 , 9877.8)	-4.9 (-14.3 , 6.7)
Zanjan	1205 (904 , 1545)	8437.9 (6327.7 , 10816.5)	4228 (3279 , 5286)	8043.4 (6238 , 10056.3)	-4.7 (-14.2 , 7.6)

Table S3: YLDs due to low back pain for adults 70 years and older in 1990 and 2019 for both sexes and percentage change in rates per 100,000 in Iran
(Generated from data available from <http://ghdx.healthdata.org/gbd-results-tool>)

	1990		2019		Percentage change in rate per 100,000
	No (95% UI)	Rate per 100,000 (95% UI)	No (95% UI)	Rate per 100,000 (95% UI)	
Iran	23002 (15890 , 32036)	2394 (1653.9 , 3334.4)	78198 (54988 , 106042)	2252.3 (1583.8 , 3054.3)	-5.9 (-13.3 , 3.2)
Alborz	454 (312 , 634)	2315.5 (1591.2 , 3234.3)	2330 (1597 , 3225)	2152 (1475.5 , 2979.1)	-7.1 (-15.4 , 1.9)
Ardebil	374 (255 , 515)	2353.8 (1608.2 , 3242.9)	1241 (862 , 1691)	2203.1 (1529.3 , 3001.3)	-6.4 (-15.9 , 4.4)
Bushehr	203 (138 , 282)	2290.7 (1557.7 , 3176.9)	793 (545 , 1094)	2147.2 (1475.5 , 2964.2)	-6.3 (-15.1 , 2.9)
Chahar Mahaal and Bakhtiari	258 (176 , 360)	2331 (1592.9 , 3254.8)	818 (568 , 1118)	2172.5 (1506.7 , 2969.2)	-6.8 (-17.4 , 6.4)
East Azarbayejan	1135 (745 , 1602)	2117.5 (1390.5 , 2987.8)	3536 (2391 , 4886)	1912.7 (1293.4 , 2642.9)	-9.7 (-21 , 5.8)
Fars	1295 (871 , 1806)	2310.1 (1553.6 , 3222.6)	4300 (3005 , 5885)	2152.9 (1504.7 , 2946.4)	-6.8 (-15.4 , 4.4)
Gilan	1053 (715 , 1477)	2347.9 (1595.2 , 3293.7)	3388 (2323 , 4632)	2172.2 (1489.4 , 2970.1)	-7.5 (-17.6 , 5.6)
Golestan	435 (293 , 606)	2368.2 (1595 , 3296.4)	1342 (936 , 1821)	2185.1 (1523.8 , 2965.7)	-7.7 (-16.9 , 3.3)
Hamadan	771 (522 , 1076)	2351.4 (1592.4 , 3283.3)	2058 (1437 , 2829)	2179.5 (1521.6 , 2995.1)	-7.3 (-17.6 , 5.9)
Hormozgan	371 (254 , 517)	2343.6 (1604.5 , 3266.2)	1084 (755 , 1473)	2156.8 (1501.6 , 2930)	-8 (-16.9 , 2.2)
Ilam	136 (94 , 188)	2340.7 (1614.1 , 3237.4)	408 (282 , 555)	2186 (1511.1 , 2975.6)	-6.6 (-14.2 , 2.2)
Isfahan	1703 (1164 , 2408)	2311.6 (1580.1 , 3267.5)	5405 (3729 , 7441)	2141.5 (1477.1 , 2947.9)	-7.4 (-16.7 , 3.6)
Kerman	744 (507 , 1032)	2335.1 (1590.3 , 3238.5)	2399 (1662 , 3276)	2166.3 (1500.9 , 2957.9)	-7.2 (-18 , 6.9)
Kermanshah	632 (429 , 885)	2350.8 (1595.5 , 3290.8)	1856 (1282 , 2514)	2160.9 (1492.9 , 2927)	-8.1 (-17.1 , 2.8)
Khorasan-e-Razavi	1901 (1272 , 2656)	2331.2 (1560.2 , 3257.5)	5632 (3922 , 7693)	2130.7 (1483.8 , 2910.8)	-8.6 (-19.2 , 3.9)
Khuzestan	1253 (862 , 1737)	2301 (1583.8 , 3191.3)	3448 (2394 , 4709)	2141.5 (1486.8 , 2924.7)	-6.9 (-14.7 , 1.4)

Kohgiluyeh and Boyer-Ahmad	108 (74 , 150)	2311.7 (1571.4 , 3196.6)	457 (315 , 621)	2148.3 (1479.4 , 2918)	-7.1 (-16.6 , 4)
Kurdistan	486 (328 , 681)	2362.9 (1595.8 , 3310.5)	1483 (1033 , 2023)	2183.6 (1520.3 , 2978)	-7.6 (-15.8 , 1.6)
Lorestan	533 (362 , 739)	2340.3 (1588 , 3241.3)	1599 (1115 , 2175)	2191.1 (1528.1 , 2981.1)	-6.4 (-16.1 , 4.6)
Markazi	562 (381 , 780)	2308.5 (1564.5 , 3203.4)	1802 (1251 , 2441)	2149.4 (1492.7 , 2912.3)	-6.9 (-17.6 , 6.7)
Mazandaran	1522 (1062 , 2057)	3395.5 (2370 , 4588.6)	5680 (4015 , 7560)	3229.8 (2282.9 , 4299.3)	-4.9 (-13.1 , 5.4)
North Khorasan	208 (139 , 294)	2363.2 (1580.2 , 3341.6)	765 (535 , 1039)	2166.3 (1515.8 , 2941.9)	-8.3 (-17.8 , 4.5)
Qazvin	407 (276 , 569)	2345.2 (1591 , 3280.1)	1181 (822 , 1620)	2171.7 (1511.5 , 2980.1)	-7.4 (-16.2 , 5)
Qom	266 (181 , 369)	2239.2 (1523.1 , 3101.4)	1008 (699 , 1386)	2112.2 (1464.8 , 2902.8)	-5.7 (-14.4 , 5.1)
Semnan	267 (179 , 374)	2300.8 (1545.3 , 3218.9)	728 (500 , 983)	2153.5 (1480.5 , 2908.7)	-6.4 (-16.4 , 6.1)
Sistan and Baluchistan	444 (303 , 625)	2325.5 (1589.3 , 3271.5)	1215 (860 , 1670)	2137.2 (1513.3 , 2937.1)	-8.1 (-18 , 3.6)
South Khorasan	330 (222 , 464)	2345.5 (1577.5 , 3299.1)	871 (592 , 1185)	2168.8 (1475.1 , 2951.7)	-7.5 (-17.9 , 5.1)
Tehran	3775 (2592 , 5282)	2500.8 (1717.5 , 3499.3)	16597 (11789 , 22402)	2424.2 (1721.9 , 3272.2)	-3.1 (-12.2 , 7.6)
West Azarbayejan	707 (480 , 985)	2360.8 (1602.7 , 3288.8)	2619 (1822 , 3592)	2202 (1532.6 , 3020.6)	-6.7 (-15.6 , 4.2)
Yazd	332 (227 , 462)	2295.9 (1566.3 , 3194.7)	1004 (698 , 1372)	2142.2 (1490.3 , 2927.8)	-6.7 (-17.2 , 5.9)
Zanjan	337 (225 , 473)	2356.2 (1578.1 , 3314.2)	1152 (800 , 1572)	2192.4 (1522.6 , 2991.5)	-7 (-17.2 , 6)

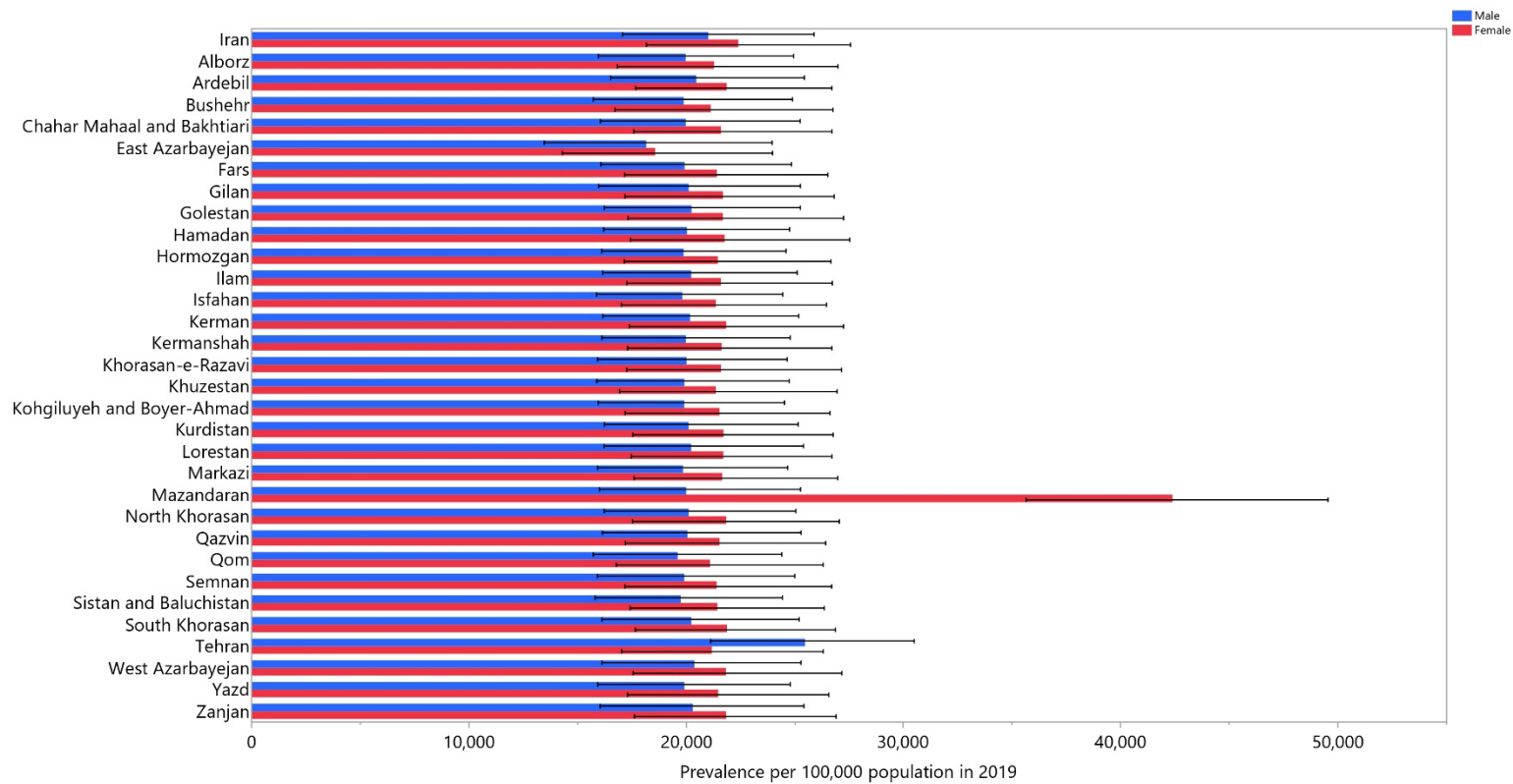


Figure S1. The Point Prevalence of LBP (per 100,000 population) for Adults Aged 70 and Older in 2019 by Sex and Province

Note. LBP: Low back pain. Generated from data available from <http://ghdx.healthdata.org/gbd-results-tool>.

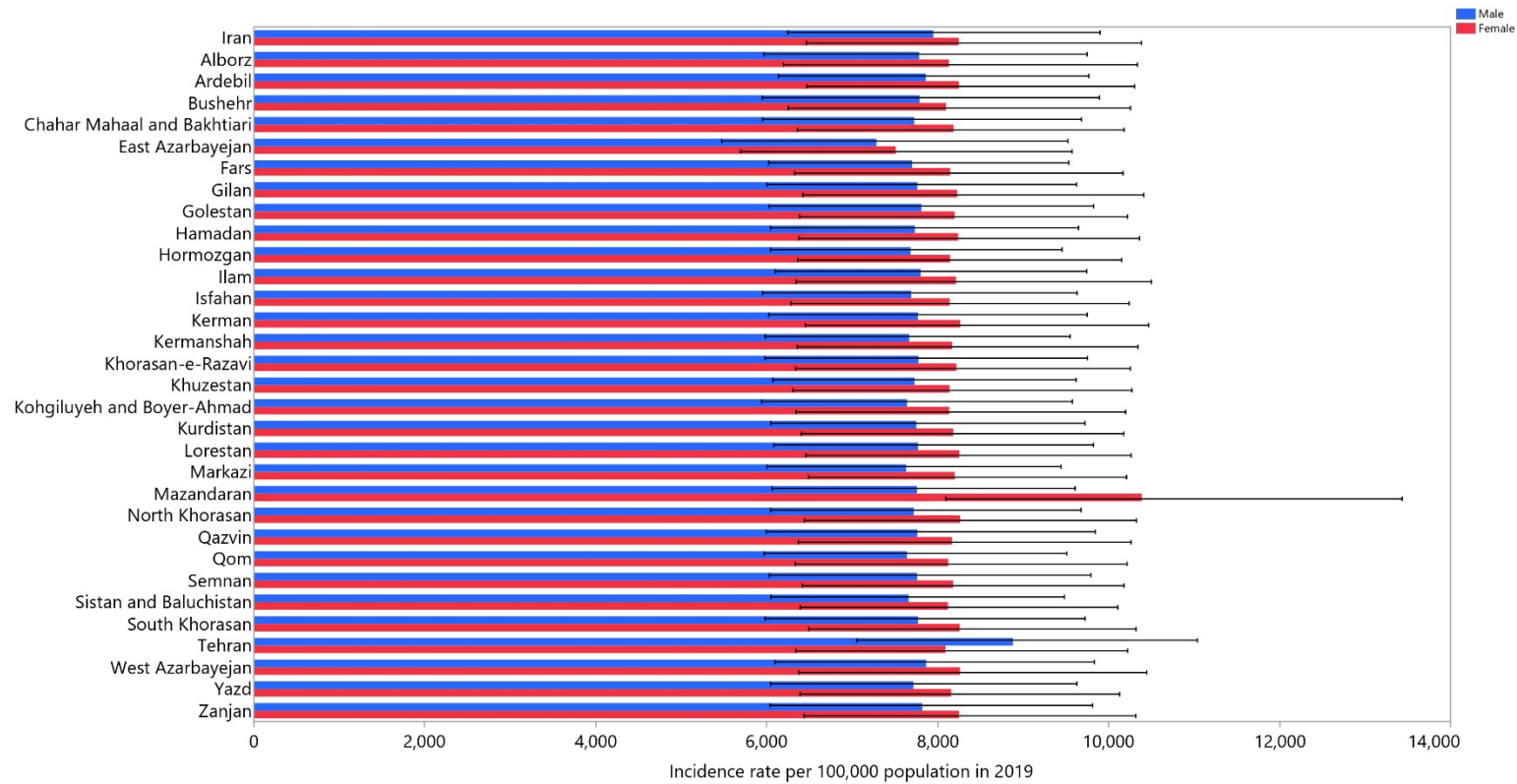


Figure S2. The Incidence Rate of LBP (per 100,000 population) for Adults Aged 70 and Older in 2019 by Sex and Province

Note. LBP: Low back pain. Generated from data available from <http://ghdx.healthdata.org/gbd-results-tool>.

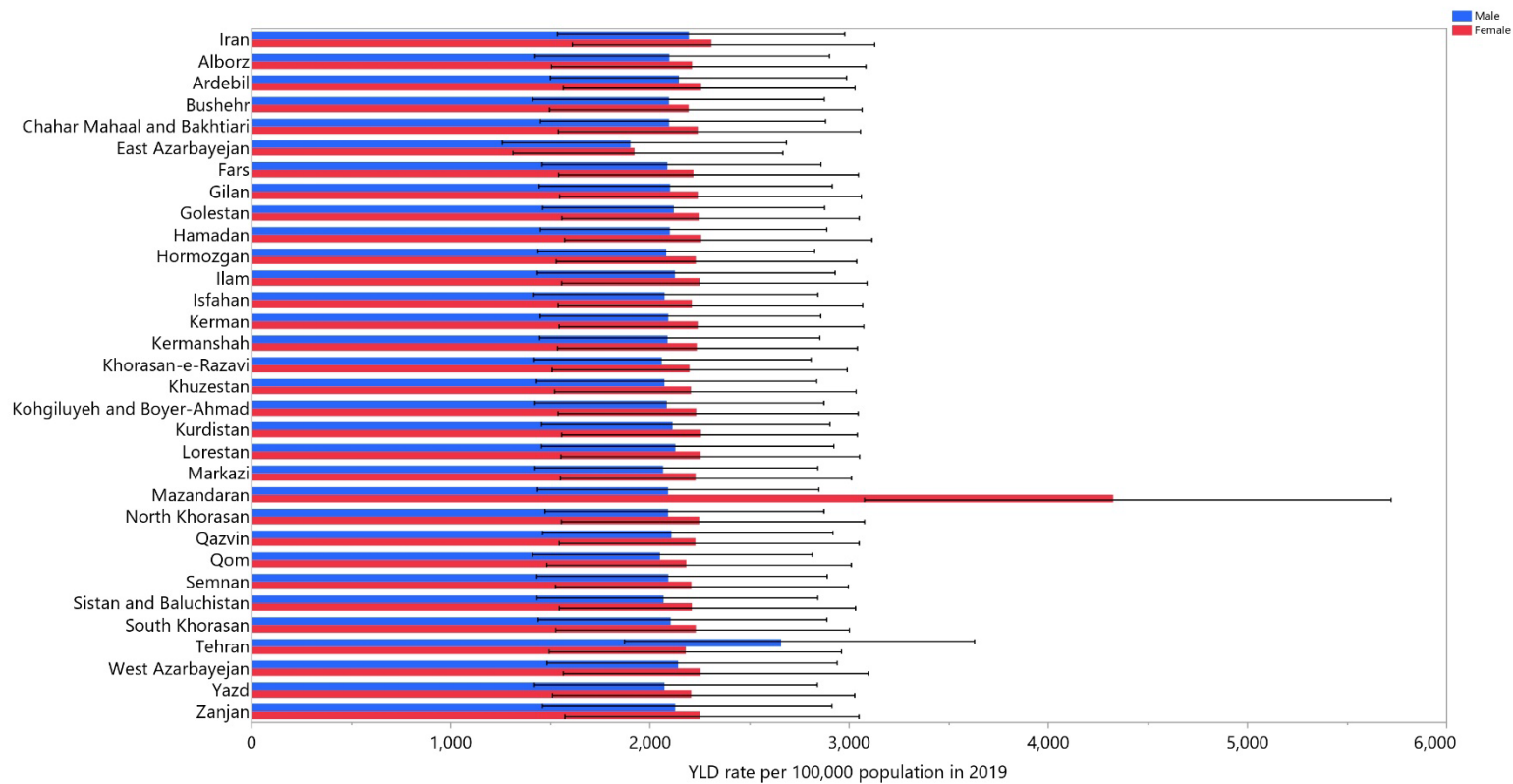


Figure S3. The YLD Rate of LBP (per 100,000 population) for Adults Aged 70 and Older in 2019, by Sex and Province

Note. YLD: Years lived with disability; LBP: Low back pain. Generated from data available from <http://ghdx.healthdata.org/gbd-results-tool>.

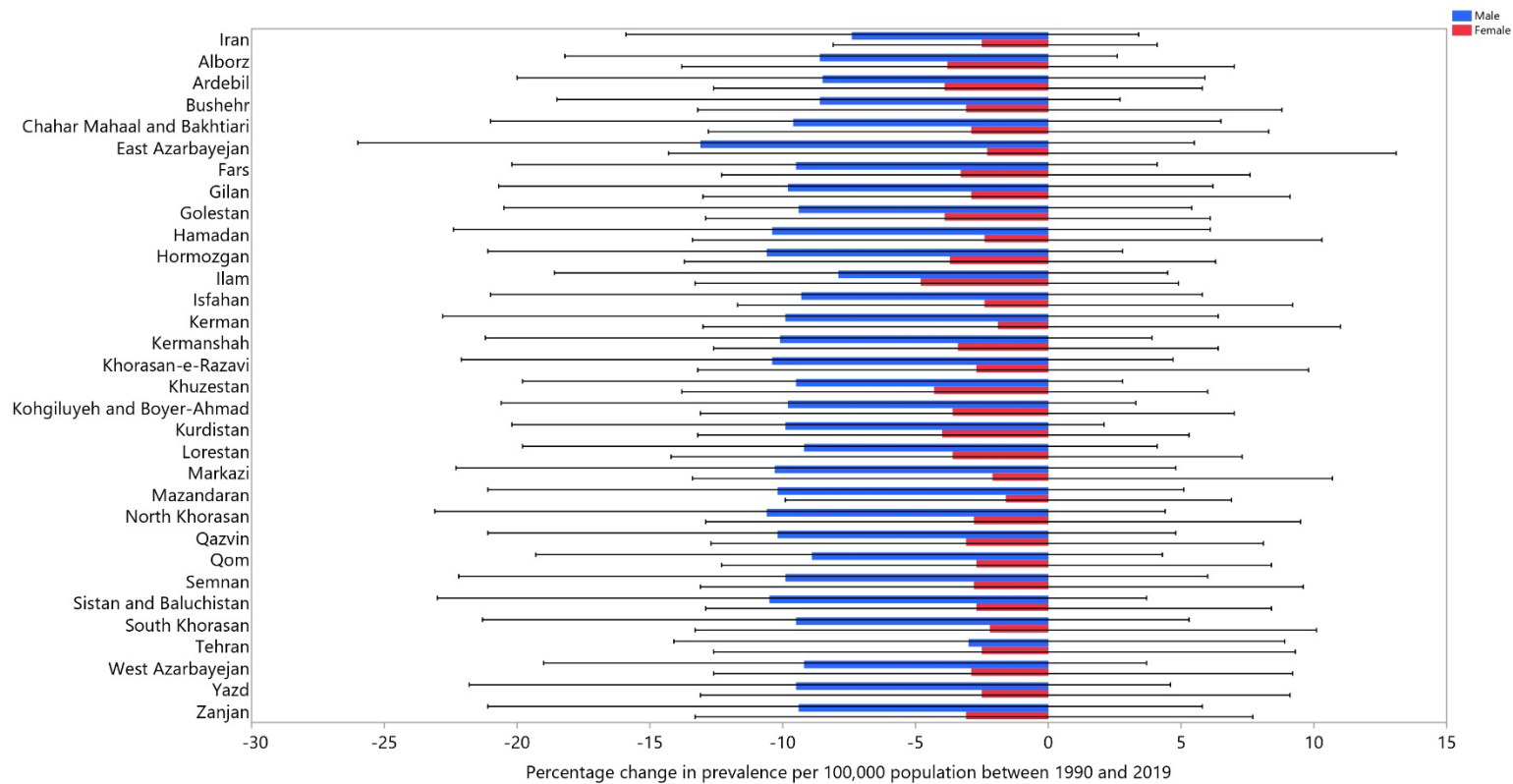


Figure S4. The Percentage Change in the Point Prevalence of LBP from 1990 to 2019 for Adults Aged 70 and older by Sex and Province

Note. LBP: Low back pain. Generated from data available from <http://ghdx.healthdata.org/gbd-results-tool>.

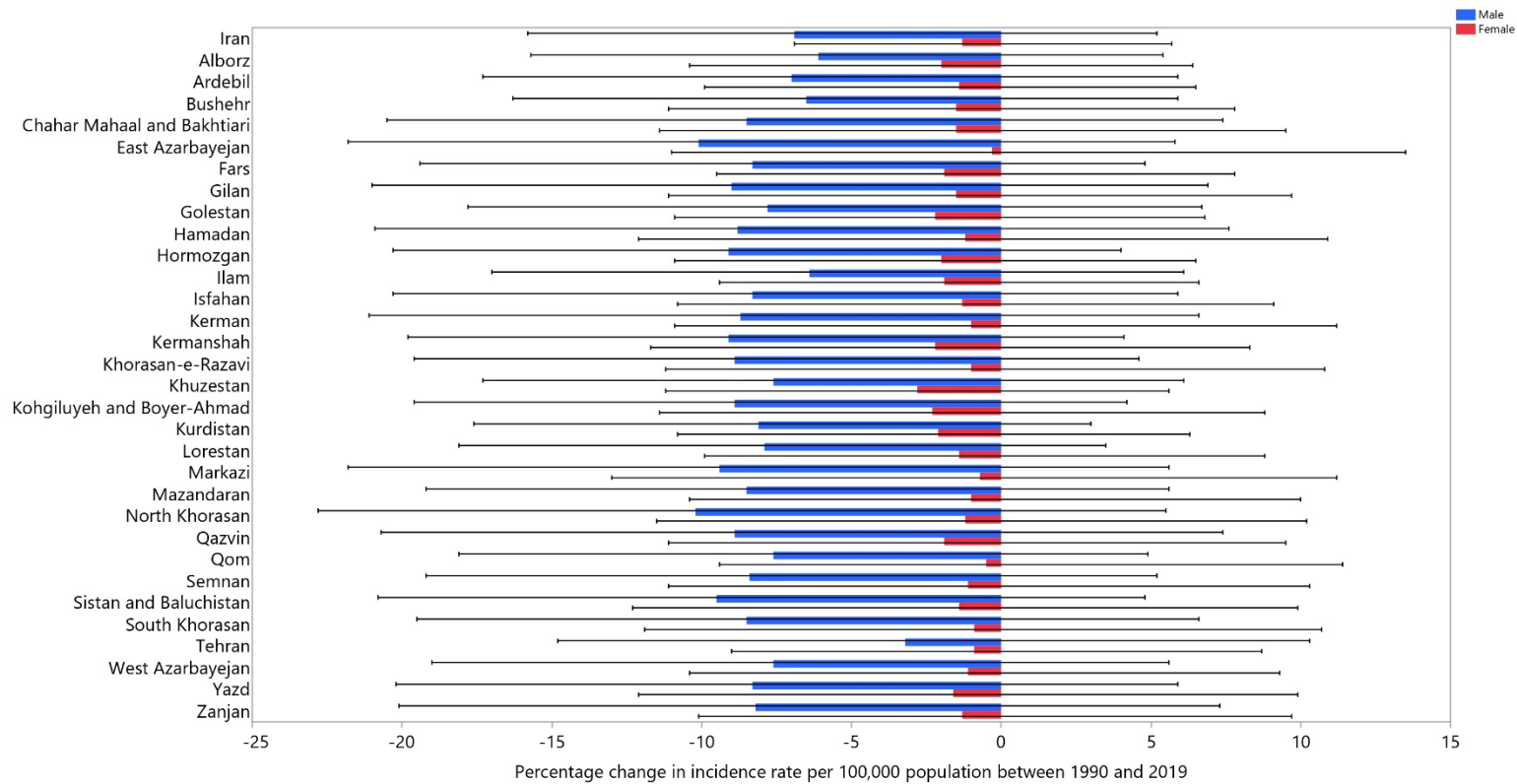


Figure S5. The Percentage Change in the Incidence Rate of LBP from 1990 to 2019 for Adults Aged 70 and Older, by Sex and Province

Note. LBP: Low back pain. Generated from data available from <http://ghdx.healthdata.org/gbd-results-tool>.

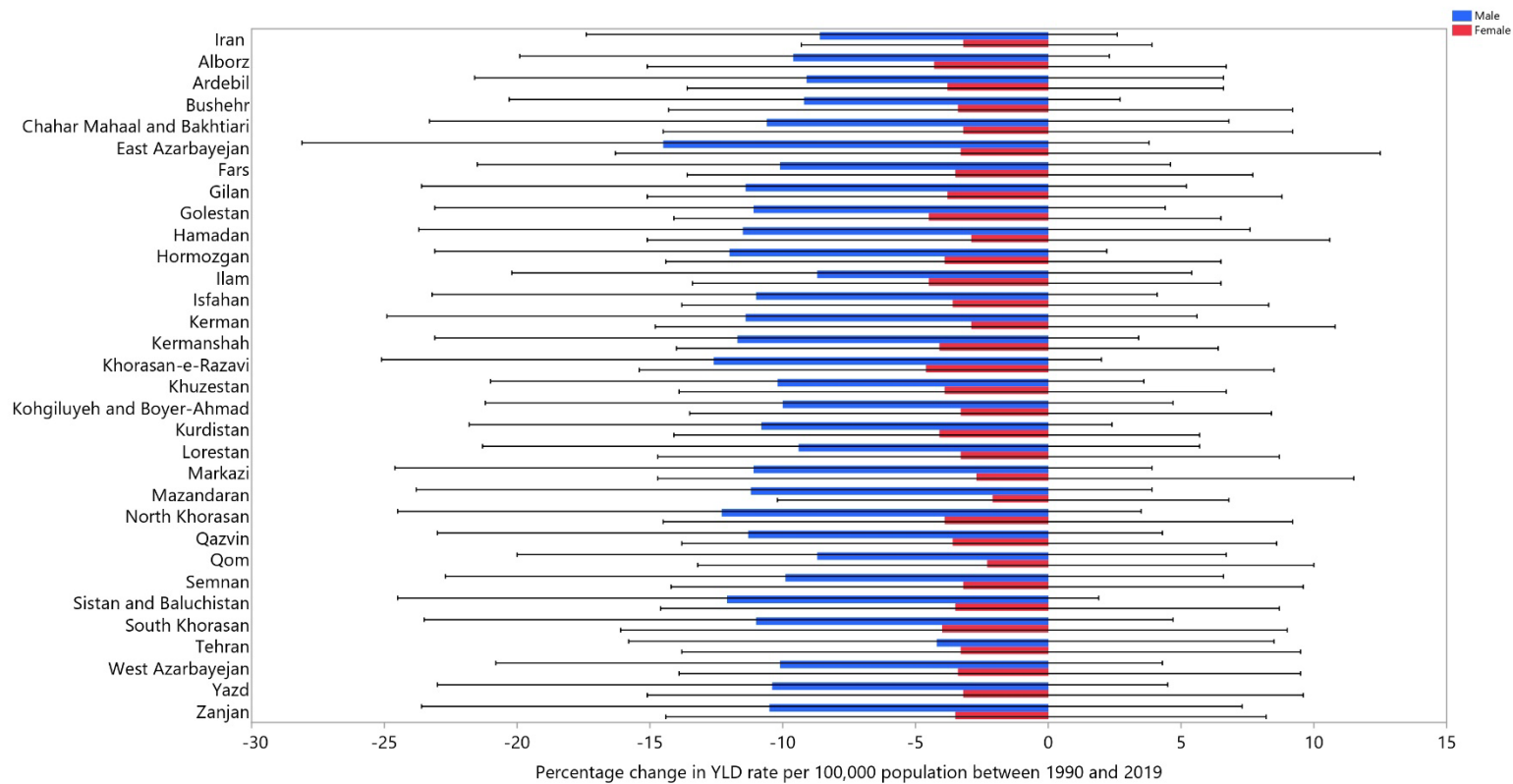


Figure S6. The Percentage Change in the YLD Rate of LBP from 1990 to 2019 for Adults Aged 70 and Older by Sex and Province

Note. YLD: Years lived with disability. Generated from data available from <http://ghdx.healthdata.org/gbd-results-tool>.