

Supplementary File 1

Table S1: Prevalence of chronic kidney disease for adults 70 years and older in 1990 and 2021 for both sexes and percentage change in rates per 100,000 in Iran (Generated from data available from http://ghdx.healthdata.org/gbd-results-tool)					
	1990		2021		Percentage change in rate per 100,000
	No (95% UI)	Rate per 100,000 (95% UI)	No (95% UI)	Rate per 100,000 (95% UI)	
Iran	405494 (362988 , 445491)	41790.3 (37409.6 , 45912.5)	1602875 (1453618 , 1744928)	43894.4 (39807 , 47784.5)	5 (1.9 , 8.5)
Alborz	9361 (8333 , 10426)	39388 (35062.5 , 43870.6)	42492 (38188 , 46772)	40576.6 (36466.9 , 44663.4)	3 (-1.1 , 7.2)
Ardebil	6911 (6234 , 7618)	40545.7 (36571.6 , 44690.2)	25290 (22799 , 27613)	43175.7 (38921.7 , 47140.2)	6.5 (1.9 , 11.5)
Bushehr	3452 (3097 , 3785)	40288 (36141.2 , 44168)	15960 (14378 , 17488)	40840.8 (36792.5 , 44751.5)	1.4 (-2.8 , 5.7)
Chahar Mahaal and Bakhtiari	4172 (3738 , 4622)	38397.3 (34403.3 , 42541.3)	16581 (15011 , 18150)	40453.9 (36623.5 , 44282)	5.4 (0.7 , 10.1)
East Azarbayegan	21452 (19297 , 23609)	41399.7 (37240.5 , 45561.8)	79066 (71489 , 86416)	42938.5 (38823.6 , 46930)	3.7 (-0.6 , 8.2)
Fars	24942 (22327 , 27567)	46092.1 (41258.7 , 50942.2)	111476 (101363 , 121770)	50357.2 (45788.9 , 55007.3)	9.3 (4.5 , 14.3)
Gilan	17728 (15934 , 19622)	40170.4 (36105.1 , 44462)	63921 (57790 , 69548)	41656 (37660.5 , 45322.7)	3.7 (-0.7 , 8.8)

Golestan	9004 (8051 , 9945)	47263.2 (42260.5 , 52200.8)	33478 (30419 , 36393)	48956.2 (44482.6 , 53219.6)	3.6 (-1.6 , 8.5)
Hamadan	12574 (11272 , 13946)	38946.4 (34912.7 , 43193.3)	40165 (36426 , 43887)	41507.7 (37643.7 , 45354.3)	6.6 (1 , 12.5)
Hormozgan	6339 (5679 , 7020)	41373.6 (37063.9 , 45816.5)	22449 (20175 , 24625)	42553.6 (38242.6 , 46679.3)	2.9 (-1.6 , 7.2)
Ilam	2629 (2377 , 2875)	41315.1 (37362.8 , 45175.6)	9687 (8714 , 10681)	42363.7 (38104.7 , 46708.2)	2.5 (-1.4 , 6.5)
Isfahan	32007 (27885 , 36092)	45186.8 (39367 , 50954.1)	116677 (103980 , 128987)	45574.3 (40614.7 , 50382.8)	0.9 (-4.8 , 6.5)
Kerman	13502 (12104 , 14975)	40494.3 (36302.3 , 44912.3)	47879 (43200 , 52578)	42557.6 (38398.8 , 46734.2)	5.1 (0 , 9.6)
Kermanshah	10766 (9695 , 11890)	39734.2 (35778.7 , 43882.5)	40922 (36457 , 44799)	41818.8 (37255.8 , 45780.4)	5.2 (0.7 , 10.4)
Khorasan-e-Razavi	30329 (26791 , 33663)	38598.6 (34096.2 , 42841.7)	108468 (97130 , 119471)	40673.9 (36422.5 , 44800)	5.4 (0.3 , 10.8)
Khuzestan	23054 (20690 , 25383)	41668.4 (37395.5 , 45877.4)	70397 (63629 , 76723)	42755 (38644.7 , 46597.1)	2.6 (-1.1 , 6.6)
Kohgiluyeh and Boyer-Ahmad	2201 (1961 , 2429)	39152.5 (34881.6 , 43205.4)	11312 (10199 , 12280)	40966.8 (36937.9 , 44474)	4.6 (0 , 9.7)
Kurdistan	8589 (7713 , 9436)	40073 (35984.1 , 44022.5)	32715 (29529 , 35696)	42011.7 (37920.9 , 45840)	4.8 (0.3 , 9.9)
Lorestan	9660 (8712 , 10685)	39577.3 (35692.5 , 43776.3)	29389 (26502 , 32161)	40992.6 (36965.2 , 44858.6)	3.6 (-1 , 8.1)
Markazi	8956 (8039 , 9917)	40562.2 (36409.8 , 44915.3)	36571 (32992 , 40022)	43241.6 (39010.2 , 47322.1)	6.6 (1 , 12.4)

Mazandaran	17558 (15629 , 19379)	40300.4 (35873.9 , 44479.6)	76978 (69543 , 83881)	42035.8 (37975.3 , 45805.1)	4.3 (-0.1 , 8.9)
North Khorasan	3394 (3035 , 3753)	39766.6 (35560.2 , 43981.4)	14947 (13532 , 16337)	42230.2 (38233.9 , 46157.9)	6.2 (1.5 , 11.4)
Qazvin	6657 (5936 , 7376)	39602.3 (35314.1 , 43879.5)	22717 (20518 , 24895)	41733.3 (37694.1 , 45735.5)	5.4 (0.1 , 10.5)
Qom	4541 (4065 , 5027)	40697.6 (36430.2 , 45053)	20875 (18869 , 22795)	41703.2 (37696.3 , 45539.7)	2.5 (-2 , 7.4)
Semnan	4627 (4125 , 5137)	40567.2 (36162.3 , 45036.1)	14651 (13294 , 15960)	42123.9 (38220.9 , 45885.5)	3.8 (-0.7 , 8.7)
Sistan and Baluchistan	8593 (7610 , 9526)	41104.6 (36399.6 , 45563.9)	30008 (27038 , 32756)	43409.9 (39112.2 , 47384.3)	5.6 (1 , 11.2)
South Khorasan	5406 (4831 , 5967)	39812.6 (35574.6 , 43941.3)	17450 (15816 , 18989)	42348.7 (38382.8 , 46083.9)	6.4 (1.3 , 11.3)
Tehran	74289 (66823 , 82266)	45026.1 (40500.9 , 49861)	359619 (326614 , 391319)	47184.1 (42853.7 , 51343.4)	4.8 (0.1 , 9.1)
West Azarbayejan	11651 (10441 , 12918)	39884.2 (35742.8 , 44221.5)	49353 (44727 , 54059)	41269.5 (37401.1 , 45204.6)	3.5 (-0.8 , 8.1)
Yazd	5654 (5069 , 6272)	39956.6 (35821.4 , 44328.9)	19578 (17720 , 21381)	41844.3 (37874.3 , 45698.8)	4.7 (0 , 9.6)
Zanjan	5494 (4905 , 6074)	39395.3 (35172.7 , 43554.4)	21804 (19723 , 23697)	41564.1 (37597.3 , 45171.1)	5.5 (0.8 , 11.1)

Table S2: Deaths of chronic kidney disease for adults 70 years and older in 1990 and 2021 for both sexes and percentage change in rates per 100,000 in Iran
(Generated from data available from <http://ghdx.healthdata.org/gbd-results-tool>)

	1990		2021		Percentage change in rate per 100,000
	No (95% UI)	Rate per 100,000 (95% UI)	No (95% UI)	Rate per 100,000 (95% UI)	
Iran	1546 (1087 , 2204)	159.4 (112.1 , 227.1)	8725 (6859 , 9815)	238.9 (187.8 , 268.8)	49.9 (-4 , 90.6)
Alborz	29 (21 , 46)	120.7 (87.7 , 193.8)	204 (153 , 252)	195.1 (145.7 , 240.7)	61.6 (-16.5 , 141.2)
Ardebil	28 (18 , 46)	163.1 (106.4 , 272.3)	169 (122 , 201)	289 (208.8 , 342.4)	77.2 (-5.1 , 152.7)
Bushehr	12 (9 , 18)	139.1 (102.1 , 208.2)	75 (59 , 91)	191.8 (149.8 , 232.9)	37.9 (-22.1 , 96)
Chahar Mahaal and Bakhtiari	13 (9 , 18)	122.1 (85 , 167.6)	59 (42 , 71)	143.9 (101.6 , 173)	17.8 (-27.2 , 59.5)
East Azarbayejan	116 (69 , 172)	224 (132.7 , 331.2)	641 (428 , 764)	347.9 (232.5 , 414.9)	55.3 (-13.6 , 121.2)
Fars	74 (53 , 106)	136 (97.1 , 196.7)	505 (387 , 615)	228 (175 , 277.8)	67.6 (7.1 , 133.5)
Gilan	63 (45 , 95)	143.2 (102.7 , 214.3)	371 (283 , 442)	241.7 (184.4 , 287.9)	68.8 (-2 , 144.6)
Golestan	30 (21 , 45)	156.8 (111.9 , 237.9)	182 (142 , 213)	266.6 (207.3 , 310.9)	70 (-0.3 , 137.8)
Hamadan	40 (29 , 63)	123.6 (89.1 , 196.3)	186 (143 , 227)	192.2 (147.5 , 234.2)	55.6 (-5.7 , 116)

Hormozgan	35 (17 , 50)	229.5 (114 , 324.6)	162 (90 , 202)	306.9 (171.5 , 383.3)	33.7 (-19.8 , 89.4)
Ilam	15 (7 , 25)	240.3 (111.1 , 393.8)	90 (46 , 107)	391.6 (201.4 , 466.9)	63 (-10 , 123.1)
Isfahan	94 (65 , 133)	133.1 (91.1 , 188)	551 (417 , 675)	215.4 (163 , 263.5)	61.8 (-4.7 , 132)
Kerman	64 (40 , 90)	190.6 (119.4 , 270)	320 (221 , 386)	284.2 (196.3 , 342.7)	49.1 (-3.4 , 111.8)
Kermanshah	46 (31 , 67)	171 (115.8 , 248.4)	231 (175 , 277)	236.3 (179 , 282.7)	38.2 (-9.2 , 92.8)
Khorasan-e-Razavi	141 (103 , 203)	179.6 (131.1 , 258.9)	693 (531 , 849)	259.8 (199.1 , 318.2)	44.7 (-14.5 , 110.7)
Khuzestan	74 (54 , 112)	134.3 (96.9 , 202.8)	319 (243 , 396)	194 (147.3 , 240.5)	44.4 (-17.4 , 113.6)
Kohgiluyeh and Boyer-Ahmad	6 (4 , 10)	104 (71.8 , 179.2)	45 (34 , 55)	162.4 (123.5 , 199.1)	56.2 (-11.6 , 131.5)
Kurdistan	36 (23 , 52)	165.7 (107.8 , 240.4)	165 (117 , 202)	212.1 (150.6 , 259.6)	28 (-16.5 , 75.6)
Lorestan	38 (25 , 67)	157.3 (103.9 , 275.3)	145 (109 , 173)	202.5 (151.7 , 241.7)	28.7 (-35.3 , 86.5)
Markazi	41 (26 , 56)	186 (117.1 , 251.7)	217 (155 , 263)	256.8 (183.5 , 311.2)	38 (-8.2 , 87.1)
Mazandaran	53 (40 , 82)	122.3 (91.2 , 187.6)	377 (294 , 461)	205.8 (160.6 , 251.8)	68.3 (-2.8 , 135.5)
North Khorasan	14 (10 , 21)	162.4 (120.8 , 243.9)	85 (65 , 102)	240.3 (184.9 , 289.2)	48 (-12.2 , 103.2)

Qazvin	26 (17 , 37)	152.1 (99.1 , 221.5)	127 (93 , 160)	234.1 (170.4 , 293.7)	53.9 (-9.9 , 113.3)
Qom	25 (15 , 33)	221.3 (130.2 , 295.7)	141 (93 , 172)	281.8 (185.2 , 343.7)	27.3 (-18.1 , 72.7)
Semnan	20 (13 , 29)	174.3 (110.3 , 256.6)	88 (63 , 108)	251.8 (179.8 , 311.4)	44.5 (-12.6 , 106)
Sistan and Baluchistan	60 (24 , 76)	288.2 (112.8 , 362.2)	266 (110 , 330)	384.9 (159.2 , 477.6)	33.5 (-5.9 , 77)
South Khorasan	22 (16 , 33)	160 (116.3 , 239.8)	101 (76 , 126)	245.3 (183.4 , 306.8)	53.3 (-11.9 , 123.7)
Tehran	240 (171 , 388)	145.3 (103.6 , 235)	1677 (1281 , 2064)	220 (168.1 , 270.9)	51.4 (-14.6 , 111.6)
West Azarbayejan	51 (36 , 74)	174.4 (124.6 , 253.4)	291 (226 , 354)	243.5 (188.6 , 295.7)	39.6 (-20.4 , 98.4)
Yazd	22 (16 , 34)	158.8 (110.6 , 238.2)	122 (92 , 147)	261.2 (197 , 314.7)	64.5 (-13.6 , 139.4)
Zanjan	19 (12 , 27)	134.2 (88.1 , 196.9)	119 (81 , 142)	226.4 (155.2 , 270.8)	68.7 (1.6 , 127.8)

Table S3: DALYs due to chronic kidney disease for adults 70 years and older in 1990 and 2019 for both sexes and percentage change in rates per 100,000 in Iran (Generated from data available from http://ghdx.healthdata.org/gbd-results-tool)					
	1990		2021		Percentage change in rate per 100,000
	No (95% UI)	Rate per 100,000 (95% UI)	No (95% UI)	Rate per 100,000 (95% UI)	
Iran	27976 (21220 , 37990)	2883.2 (2187 , 3915.2)	135028 (110941 , 150441)	3697.7 (3038.1 , 4119.8)	28.2 (-12.2 , 56.5)
Alborz	579 (440 , 888)	2437.7 (1852.7 , 3735.2)	3466 (2726 , 4181)	3309.5 (2603.4 , 3992.2)	35.8 (-23.6 , 91.5)
Ardebil	495 (349 , 790)	2905.8 (2047.2 , 4632.8)	2581 (1920 , 3013)	4406 (3278 , 5143.5)	51.6 (-13.2 , 106.8)
Bushehr	219 (169 , 305)	2556.6 (1976 , 3554.9)	1246 (1000 , 1486)	3187.3 (2560.1 , 3803.5)	24.7 (-21.4 , 66.3)
Chahar Mahaal and Bakhtiari	253 (187 , 333)	2326.5 (1723.8 , 3064.5)	978 (745 , 1140)	2386.3 (1816.8 , 2780.3)	2.6 (-29.1 , 32.4)
East Azarbayejan	1918 (1227 , 2739)	3700.6 (2368.7 , 5285.6)	9622 (6763 , 11390)	5225.3 (3673 , 6185.6)	41.2 (-15.3 , 92.3)
Fars	1402 (1056 , 1859)	2591.3 (1950.9 , 3436)	7916 (6384 , 9409)	3576.1 (2883.7 , 4250.2)	38 (-1 , 82.6)
Gilan	1133 (865 , 1552)	2568.2 (1960 , 3516.7)	5727 (4556 , 6734)	3732.4 (2969 , 4388.4)	45.3 (-6.8 , 96.3)
Golestan	584 (442 , 832)	3067.5 (2317.5 , 4367.4)	2973 (2396 , 3437)	4347.6 (3503.6 , 5026.7)	41.7 (-10.6 , 90.5)
Hamadan	762 (573 , 1121)	2360.4 (1773.8 , 3473.2)	2971 (2396 , 3605)	3070.2 (2476.1 , 3725.2)	30.1 (-13.5 , 67.8)

Hormozgan	604 (341 , 803)	3940.4 (2224.9 , 5242.9)	2406 (1456 , 2956)	4561.5 (2759.5 , 5603.5)	15.8 (-22.5 , 55.7)
Ilam	252 (133 , 388)	3962 (2091 , 6105.2)	1319 (730 , 1555)	5767.3 (3190.2 , 6800.3)	45.6 (-9.5 , 93.4)
Isfahan	1713 (1256 , 2283)	2417.8 (1773.4 , 3223.6)	8430 (6619 , 10155)	3292.8 (2585.3 , 3966.7)	36.2 (-11.2 , 87.8)
Kerman	1161 (788 , 1588)	3482.2 (2363.5 , 4763.7)	4793 (3522 , 5710)	4259.9 (3130.8 , 5075)	22.3 (-17.1 , 66.3)
Kermanshah	845 (595 , 1167)	3116.8 (2196 , 4307)	3610 (2831 , 4281)	3688.6 (2893.1 , 4375)	18.3 (-17.1 , 58.3)
Khorasan-e-Razavi	2603 (1961 , 3564)	3312.4 (2495.8 , 4535.6)	10798 (8654 , 12964)	4049.2 (3245.3 , 4861.4)	22.2 (-21.4 , 68.2)
Khuzestan	1376 (1067 , 1891)	2487 (1929.3 , 3418.1)	5266 (4275 , 6432)	3198.5 (2596.6 , 3906.5)	28.6 (-17.8 , 75.6)
Kohgiluyeh and Boyer-Ahmad	112 (83 , 174)	1991.3 (1469.3 , 3089.4)	716 (574 , 851)	2592.7 (2079.6 , 3080.8)	30.2 (-16.2 , 78.6)
Kurdistan	647 (454 , 914)	3016.4 (2116.8 , 4263.6)	2616 (1999 , 3118)	3359.4 (2567.3 , 4003.9)	11.4 (-23.7 , 48.3)
Lorestan	703 (497 , 1163)	2879.6 (2037 , 4763.8)	2350 (1862 , 2768)	3278.1 (2596.5 , 3860.9)	13.8 (-37.2 , 56.3)
Markazi	711 (491 , 896)	3221.5 (2221.7 , 4056.5)	3217 (2444 , 3806)	3804.3 (2890.2 , 4500.7)	18.1 (-15.6 , 54.5)
Mazandaran	1000 (789 , 1380)	2296 (1811 , 3168.6)	6032 (4971 , 7204)	3294 (2714.7 , 3934.1)	43.5 (-8.8 , 90.2)
North Khorasan	264 (204 , 376)	3092.8 (2389.9 , 4405)	1368 (1129 , 1616)	3866.2 (3189.4 , 4566.1)	25 (-19.5 , 66.8)

Qazvin	475 (333 , 661)	2824.3 (1981.1 , 3931.4)	1995 (1541 , 2442)	3665.5 (2831.1 , 4486.8)	29.8 (-19.8 , 72.1)
Qom	416 (270 , 536)	3729.8 (2419.9 , 4804.4)	2111 (1504 , 2554)	4216.6 (3004.8 , 5102.4)	13.1 (-22.6 , 49.6)
Semnan	360 (249 , 504)	3154.4 (2183.8 , 4422.1)	1354 (1022 , 1651)	3893.1 (2939.8 , 4745.9)	23.4 (-20.3 , 67.9)
Sistan and Baluchistan	1077 (487 , 1342)	5149.8 (2329.8 , 6417.6)	4117 (1909 , 4987)	5956 (2761.6 , 7213.6)	15.7 (-12.9 , 52)
South Khorasan	392 (301 , 539)	2888.4 (2219.1 , 3967.9)	1531 (1210 , 1856)	3716 (2936.9 , 4503.1)	28.7 (-18.5 , 77.3)
Tehran	4300 (3239 , 6515)	2606.1 (1962.9 , 3948.7)	25352 (20171 , 30420)	3326.4 (2646.5 , 3991.3)	27.6 (-20.8 , 71.9)
West Azarbayejan	867 (660 , 1173)	2969 (2260 , 4015.5)	4484 (3584 , 5408)	3749.8 (2996.7 , 4522)	26.3 (-19.6 , 69.9)
Yazd	405 (304 , 560)	2859.7 (2149.5 , 3955)	1855 (1451 , 2202)	3964.9 (3101.8 , 4706.8)	38.6 (-16.7 , 91.8)
Zanjan	349 (253 , 484)	2502.6 (1814.2 , 3467.7)	1826 (1348 , 2144)	3480.9 (2569.7 , 4086.3)	39.1 (-8.9 , 80.3)

Table S4. GBD Case Definitions of CKD

Quantity of interest	Measure	Reference or alternative	Definition
Stages 1&2 chronic kidney disease	Prevalence	Reference	Albumin to creatinine ratio (ACR) of ≥ 30 mg/g and estimated glomerular filtration rate (eGFR) > 60 mL/min/1.73m ² as estimated using the CKD-EPI equation for individuals age > 18 and the Schwartz equation for those < 18 .
Stage 3 chronic kidney disease	Prevalence	Reference	Estimated glomerular filtration rate (eGFR) 30-60 mL/min/1.73m ² as estimated using the CKD-EPI equation for individuals age > 18 and the Schwartz equation for those < 18 not on renal replacement therapy.
Stage 3 chronic kidney disease	Prevalence	Alternative	Estimated glomerular filtration rate (eGFR) 30-60

			mL/min/1.73m ² as estimated using the MDRD equation (or modifications thereof) for individuals age >18 not on renal replacement therapy.
Stage 3 chronic kidney disease	Prevalence	Alternative	Estimated glomerular filtration rate (eGFR) 30-60 mL/min/1.73m ² as estimated using the Cockcroft-Gault equation (standardised for body surface area) for individuals age >18 not on renal replacement therapy.
Stage 4 chronic kidney disease	Prevalence	Reference	Estimated glomerular filtration rate (eGFR) 15-30 mL/min/1.73m ² as estimated using the CKD-EPI equation for individuals age >18 and the Schwartz equation for those <18 not on renal replacement therapy.
Stage 4 chronic kidney disease	Prevalence	Alternative	Estimated glomerular filtration rate (eGFR) 15-30

			mL/min/1.73m ² as estimated using the MDRD equation (or modifications thereof) for individuals age >18 not on renal replacement therapy.
Stage 4 chronic kidney disease	Prevalence	Alternative	Estimated glomerular filtration rate (eGFR) 15-30 mL/min/1.73m ² as estimated using the Cockcroft-Gault equation (standardised for body surface area) for individuals age >18 not on renal replacement therapy.
Stage 5 chronic kidney disease	Prevalence	Reference	Estimated glomerular filtration rate (eGFR) <15 mL/min/1.73m ² as estimated using the CKD-EPI equation for individuals age >18 and the Schwartz equation for those <18 not on renal replacement therapy.
Stage 5 chronic kidney disease	Prevalence	Alternative	Estimated glomerular filtration rate (eGFR) <15

			mL/min/1.73m ² as estimated using the MDRD equation (or modifications thereof) for individuals age >18 not on renal replacement therapy.
Stage 5 chronic kidney disease	Prevalence	Alternative	Estimated glomerular filtration rate (eGFR) <15 mL/min/1.73m ² as estimated using the Cockcroft-Gault equation (standardised for body surface area) for individuals age >18 not on renal replacement therapy
End-stage renal disease after transplant	Incidence	Reference	Received a kidney transplant due to end- stage renal disease. Includes all kidney transplants due to ESRD, not just preemptive transplants.
End-stage renal disease after transplant	Prevalence	Reference	Ever received kidney transplant due to end- stage renal disease. Includes all kidney transplants due to

			ESRD, not just preemptive transplant.
End-stage renal disease on dialysis	Incidence	Reference	A new case of dialysis (haemodialysis or peritoneal dialysis) treatment for a period > 90 days.
End-stage renal disease on dialysis	Prevalence	Reference	On dialysis (haemodialysis or peritoneal dialysis) for > 90 days.

Figure S1: Age-standardized point prevalence of CKD (per 100,000 population) for adults 70 Years and Older in Iran in 2021, by sex and province.

Note: CKD: Chronic kidney disease (generated from data available from <http://ghdx.healthdata.org/gbd-results-tool>).

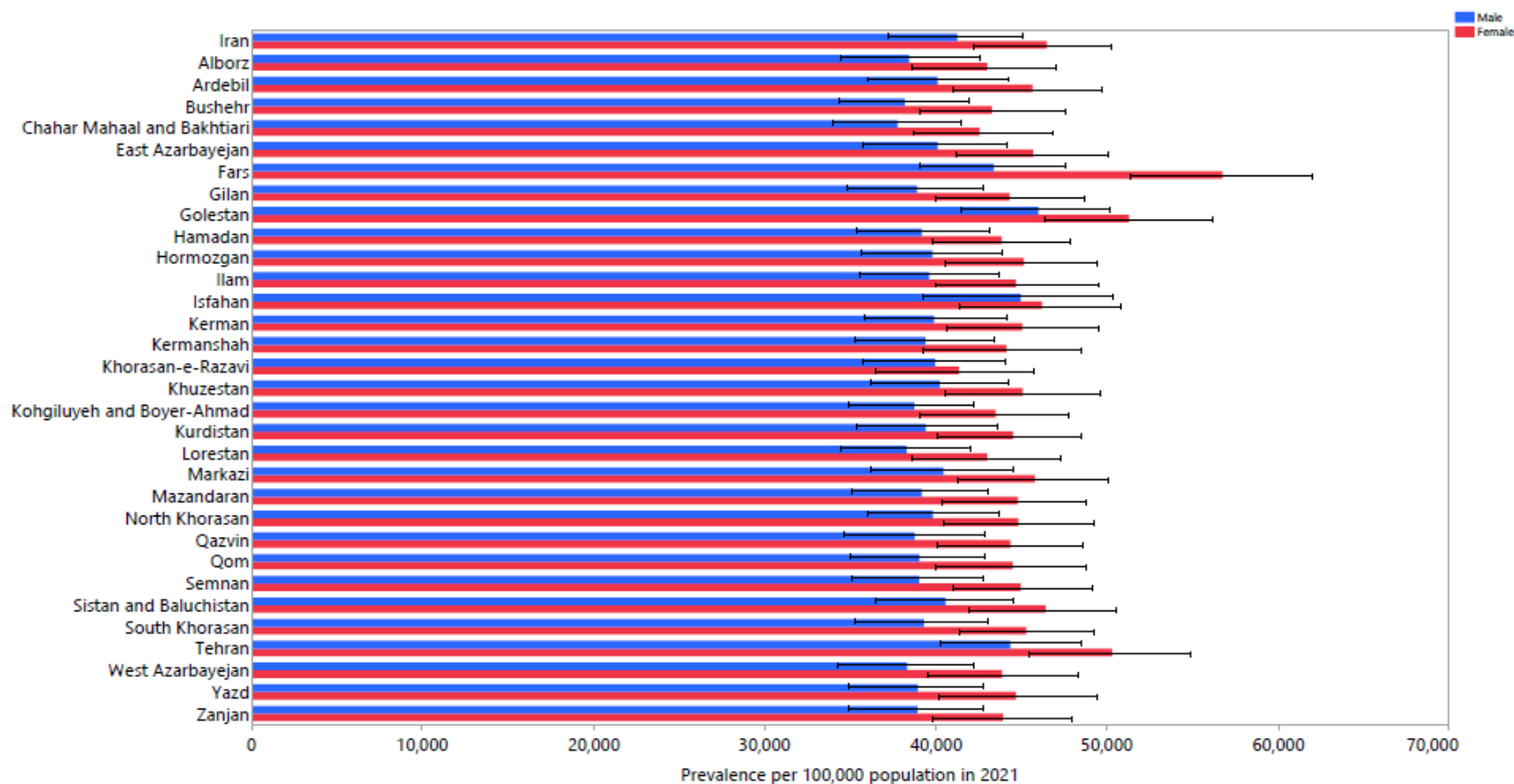


Figure S2: Age-standardized death rates of CKD (per 100,000 population) for adults 70 Years and Older in Iran in 2021, by sex and province.

Note: CKD: Chronic kidney disease (generated from data available from <http://ghdx.healthdata.org/gbd-results-tool>).

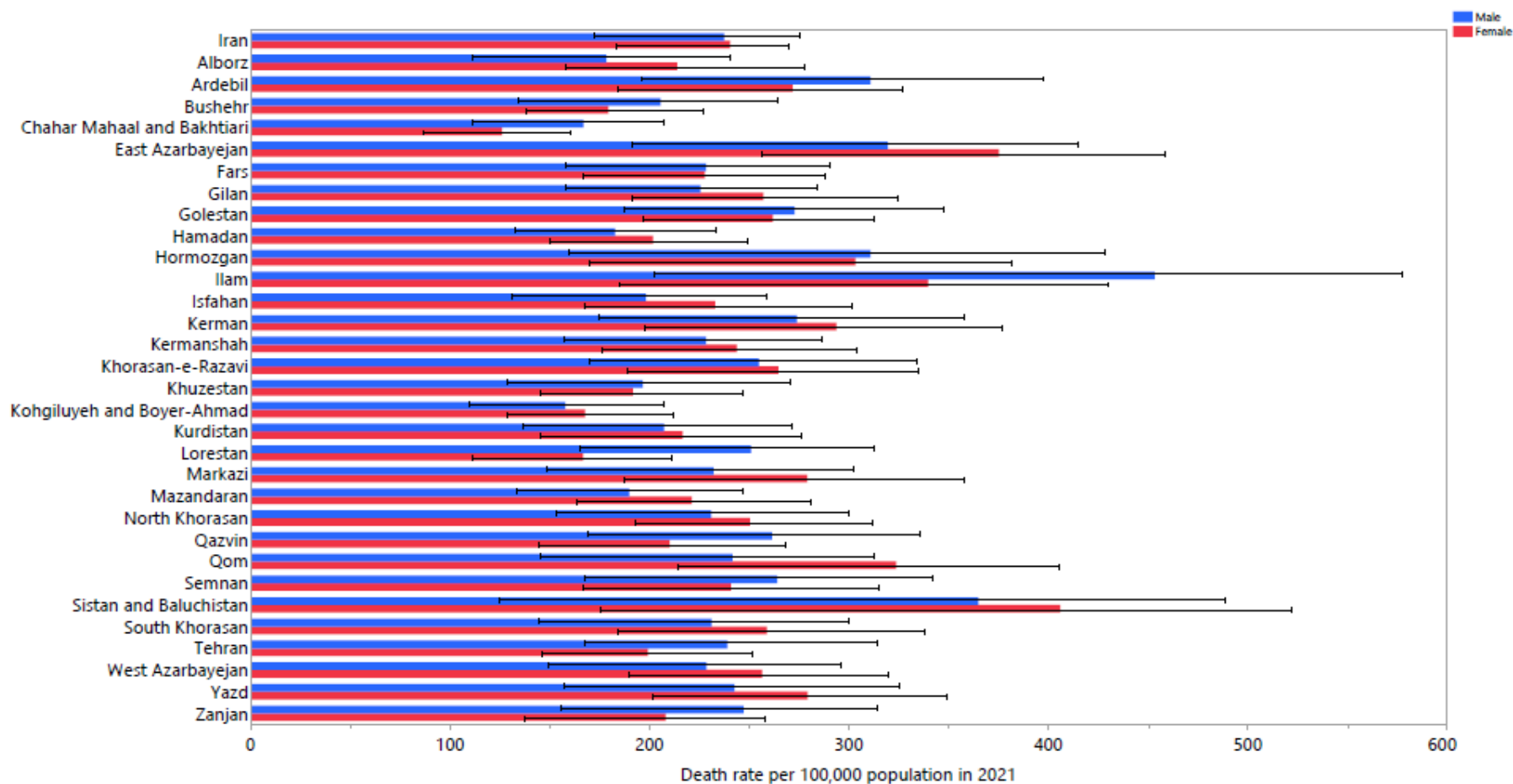


Figure S3: Age-standardized DALY rates of CKD (per 100,000 population) for adults 70 Years and Older in Iran in 2021, by sex and province.

Note: DALY=Disability-adjusted life years; CKD: Chronic kidney disease (generated from data available from <http://ghdx.healthdata.org/gbd-results-tool>).

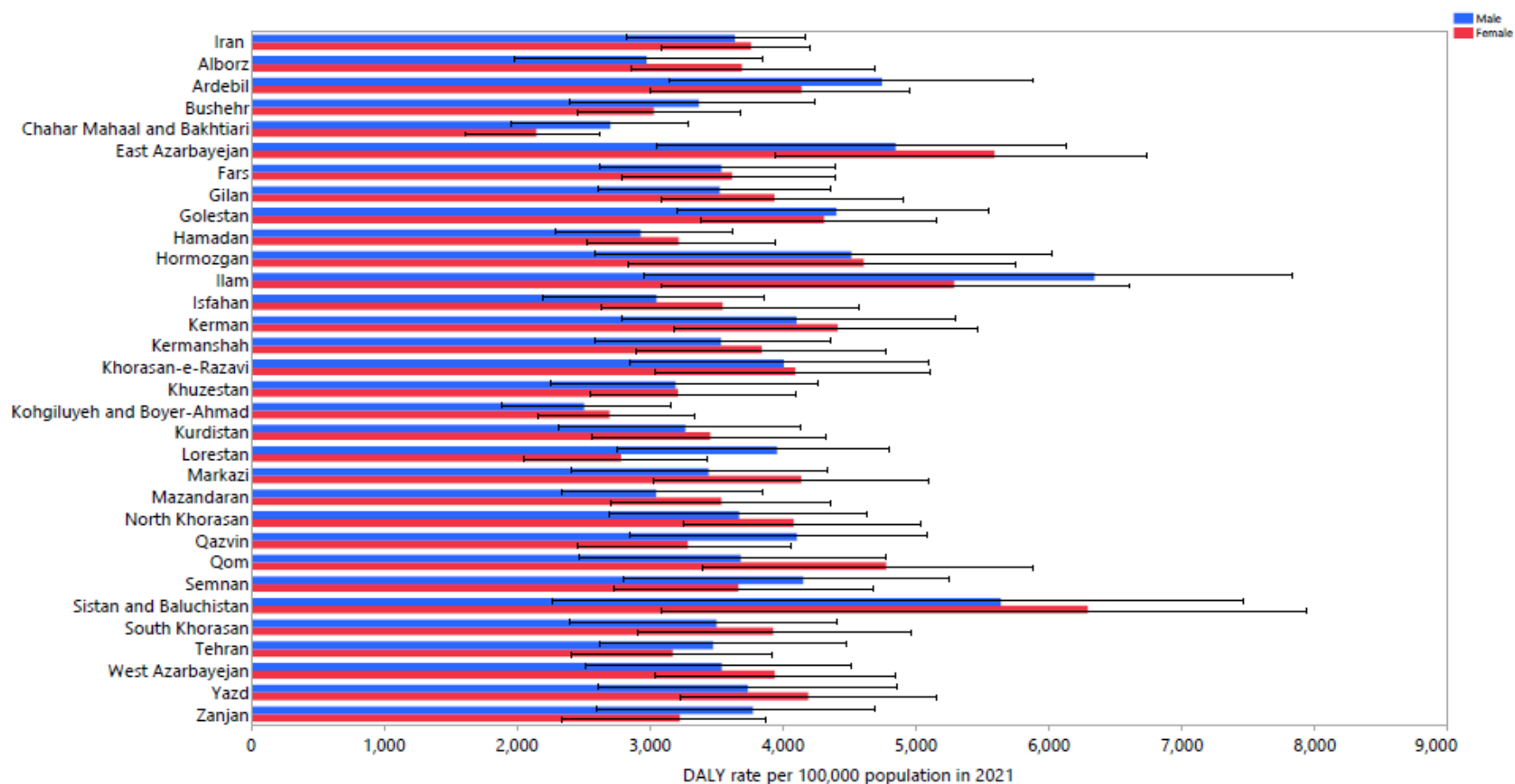


Figure S4: The percentage change in the age-standardized prevalence of CKD for adults 70 Years and Older in Iran from 1990 to 2021, by sex and province. Note: CKD: Chronic kidney disease (generated from data available from <http://ghdx.healthdata.org/gbd-results-tool>).

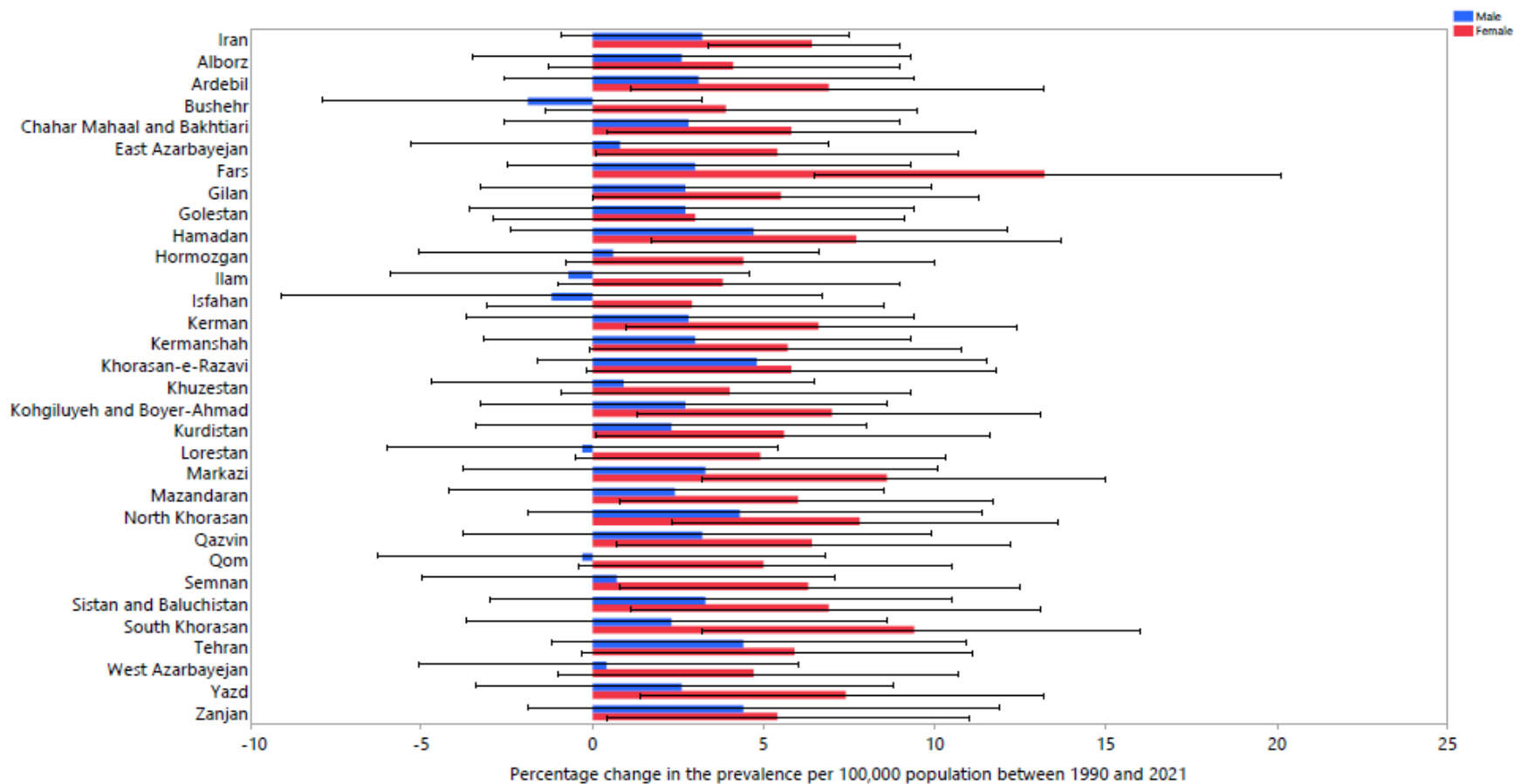


Figure S5: The percentage change in the age-standardized deaths of CKD for adults 70 Years and Older in Iran from 1990 to 2021, by sex and province. Note: CKD: Chronic kidney disease (generated from data available from <http://ghdx.healthdata.org/gbd-results-tool>).

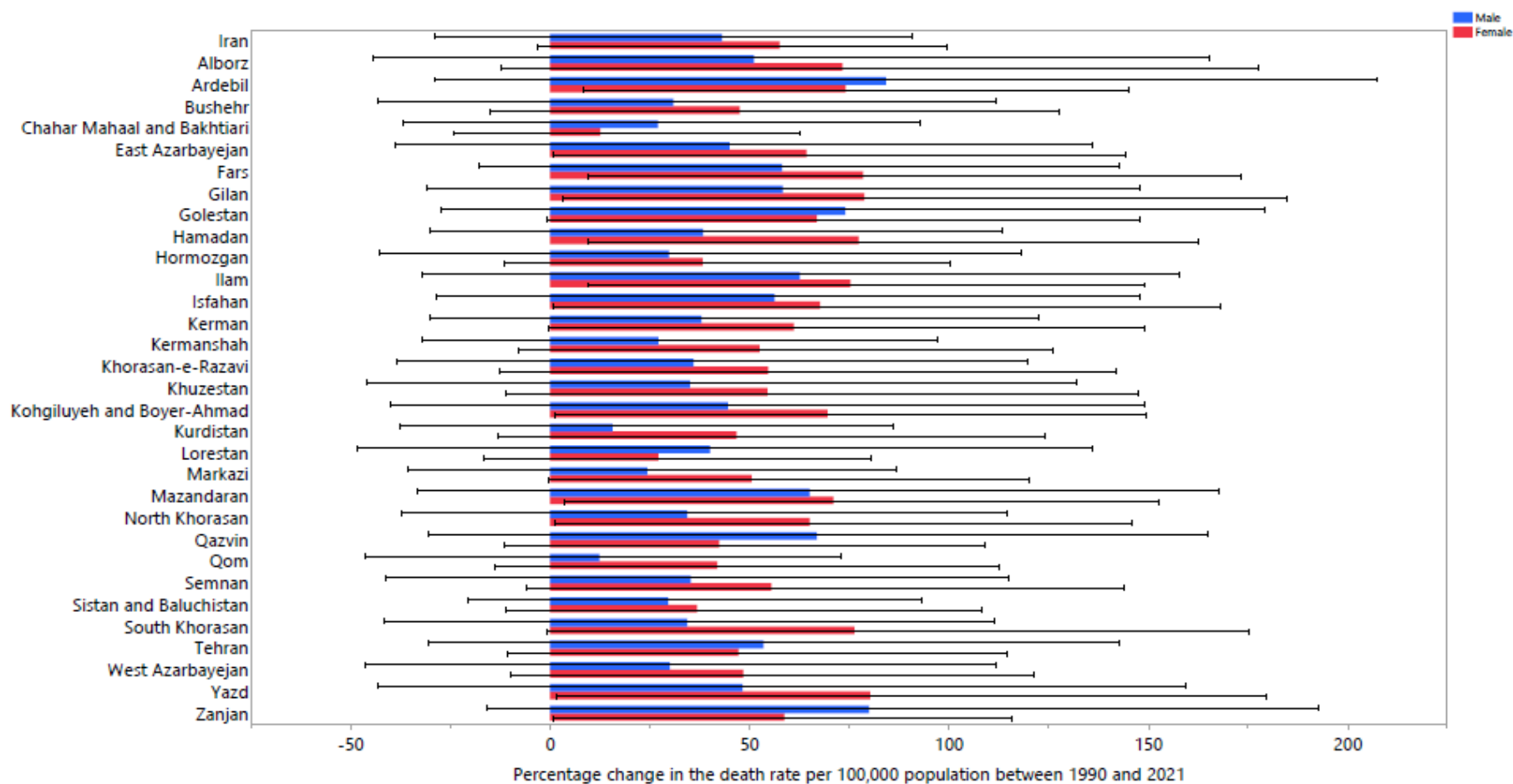


Figure S6: The percentage change in the age-standardized DALYs of CKD for adults 70 Years and Older in Iran from 1990 to 2021, by sex and province. Note: DALY=Disability-adjusted life years; CKD: Chronic kidney disease (generated from data available from <http://ghdx.healthdata.org/gbd-results-tool>).

